



STONA
LED LIGHTING

01

Description

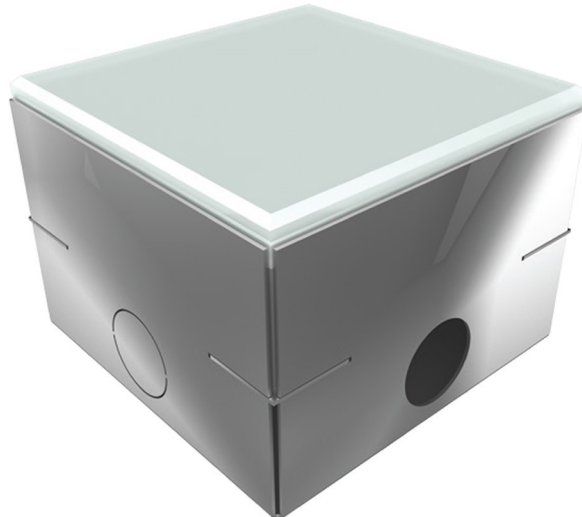
Recessed luminaire for outdoor installation in ground.
Ambient illumination with a special visual effect.
Designed to last in extremely harsh environments.

CE

IP67

IK10

50°C



Materials

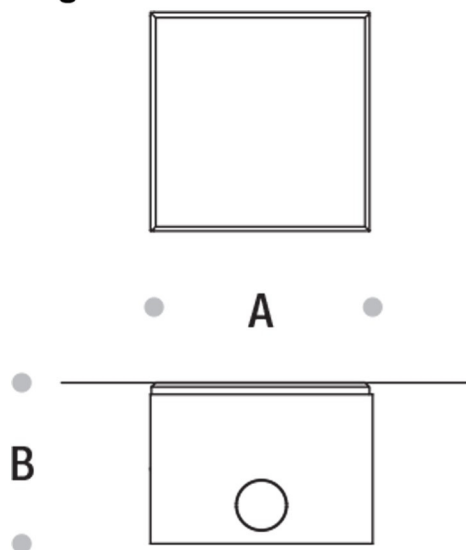
Double layer polyester powder coated paint finish die cast aluminium housing with stainless steel screws and silicone gaskets.
Built in Texrun 4W Driver. Available in anthracite gray as a standard finish or any desired RAL colour. Includes recessing box.

02

The study

LED Type	High efficiency LEDs, available in 2700K, 3000K, 4000K, 5000K, 6500K CCT tolerance within a 3-step MacAdams ellipse and LM80 compliant.
Nominal Voltage	100V-240V AC, 50/60Hz
Color Rendering Index	CRI> 80 and CRI>90 on request.
Optics	120°
Dimensions (mm)	A: 96x96 B: 75
Diffuser	Thermal-shock resistant tempered glass.
LED Specification	Minimum 60.000 hours life time. Calculation for LED fixtures are based on measurements that comply with LM-80.
Energy Efficiency Class (EEC)	A++
Ambient Temperature	Ta max=50 °C
Protection Class	IP67
Impact Resistance	IK10
Load Rating	30 kN
Insulation Class	Class I
Installation	Recessing box to be placed at ground level 20 cm drainage gravel for water evacuation. Connection via junction boxes.
Conformity	Complies with European Standards EN 60598 and CE certified.

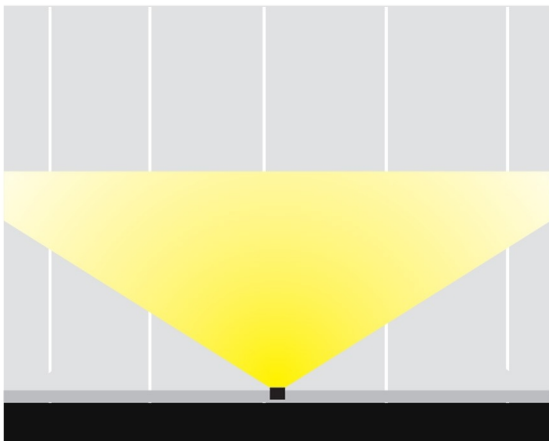
Dimension drawings



LUMEN PACKAGE AND POWER

STONA led lighting			
CODE	POWER CONSUMPTION	LUMEN OUTPUT (lm)	COLOR TEMPERATURE
RAY-BS-UPLT-SQ-4W-FR	4W	330	3000K

APPLICATION TYPE



LIGHT DISTRIBUTION

