



SEVILLE

LED LIGHTING

Presenting a new paradigm that takes urban street lighting mainstream to a new benchmark in Visual Comfort. It's a groundbreaking creation that delivers unparalleled design freedom, maximum energy efficiency and unrivaled optical and brightness control. In addition to the striking form of seamless construction. High performance optics, controls, scalability and mounting options to cover more applications and enhance the environment they occupy .

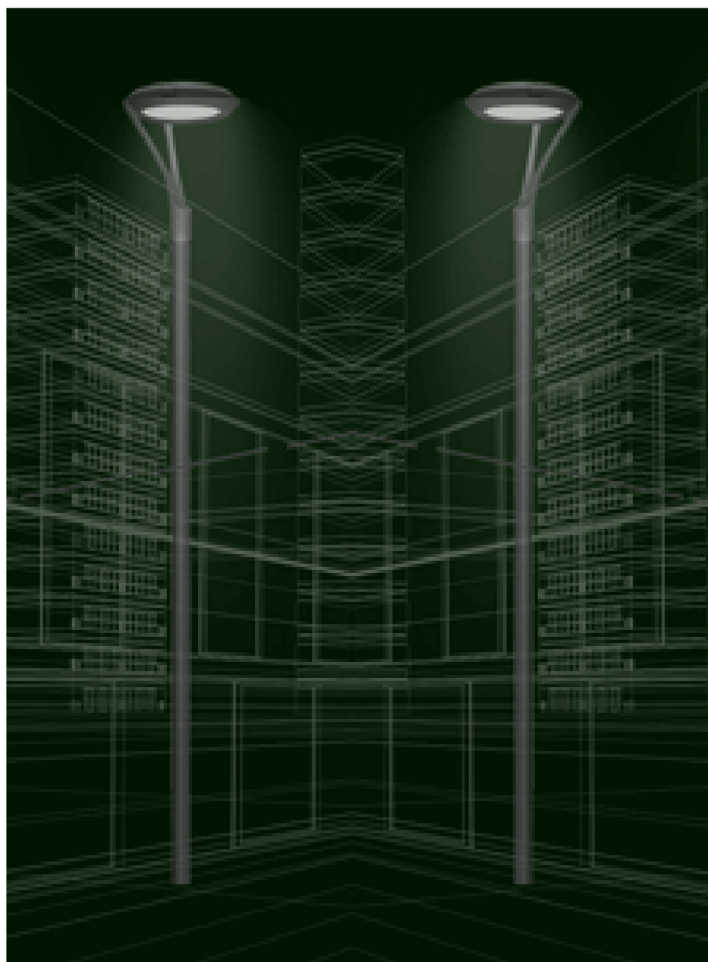


CE

IP66

IK10

50°C



The highly efficient range delivers excellent lighting levels whilst also providing the right ambiance for all urban application areas, from the outskirts of the city right through to the city center, The design is flatter, completely round and slippy, the transitions with the spigot and arm entirely flush, thereby giving your cityscape a coherent, elegant and discreet identity.

All housing components are constructed with die-cast aluminum for superior durability. One pieces silicone gaskets enable an IP66 rated optical compartment and assure optical integrity over time.

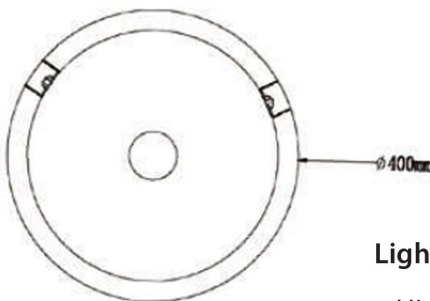
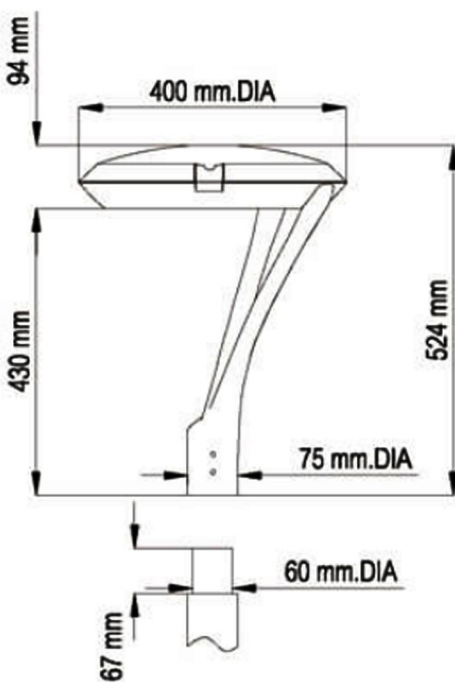
The study

02

Construction & Housing

- IP66 Rated housing is cast from corrosion resistant aluminum, maintaining strength and precision to sustain long term dayform appearance
- Aluminum alloy die-casting is designed as one-piece with internal cooling fins
- Stable mechanical system prevents damage from installation generated vibration

Dimension drawings



Light Performance

- High Visual comfortable and Glare Free. SDCM<3
- High performance optics and uniform light distribution
- Luminaire output efficacy up to 125 LPW. Minimum CRI 70 offered as standard. 80&90 CRI offered as customized

Features

Amazing is designed to the highest standards of excellence and quality with attention focused on the finest details to aid installation and maintenance

- High visual comfort
- High performance optics and uniform light distribution
- Hidden hinge allows access to the electrical components without compromising the exterior design



Optics

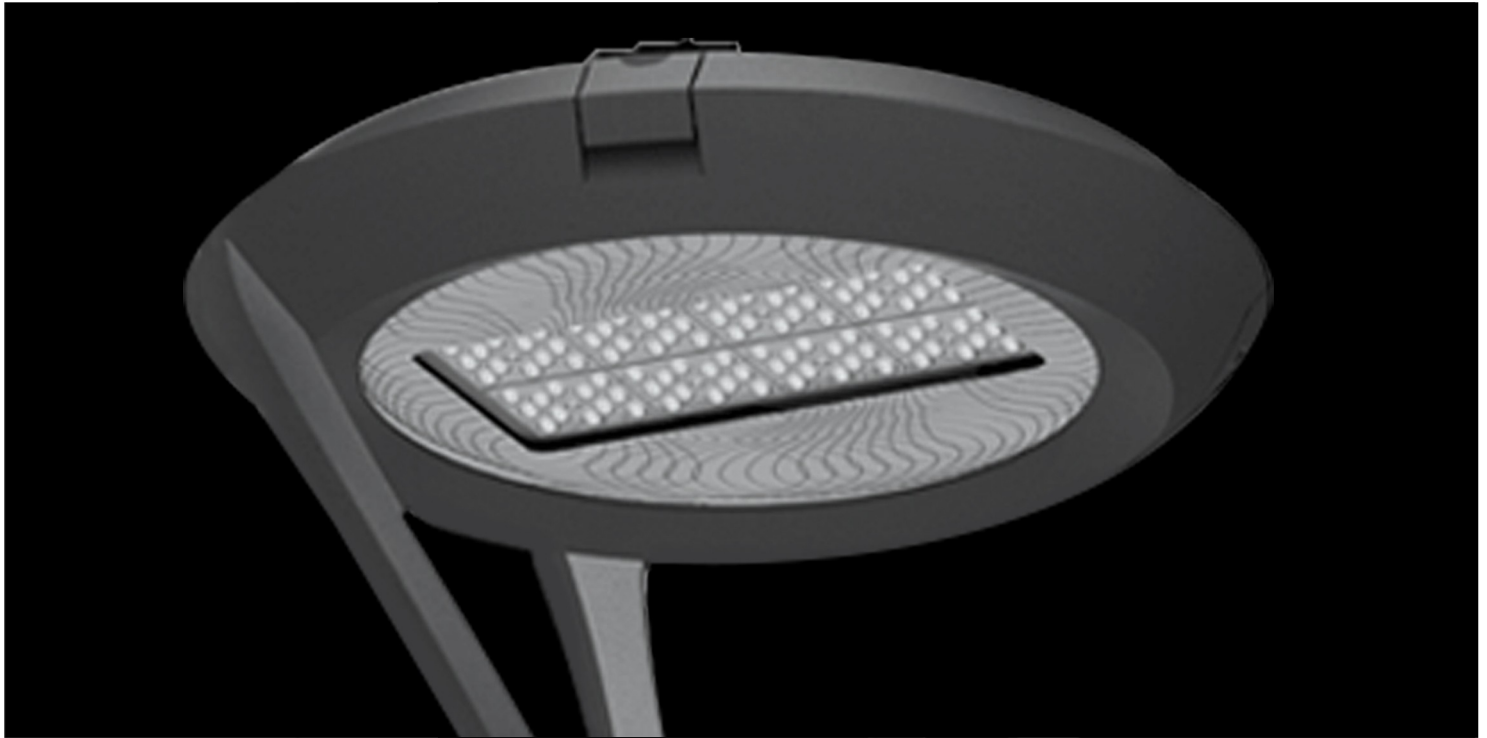
- Specifically designed for pedestrian applications
- Optical PMMA LGP plus high-degree diffusion outdoor PC lens produces symmetric 80° beam light distribution, The LGP is manufactured from precision injection molded PMMA resulting in a pixelation free optical image for improved glare control and visual comfort

Benefits

- City visual comfortable
- An integrated Urban Styling lighting toolbox designed for many different urban applications
- Lower energy consumption by up to 80%, with a corresponding reduction in CO2 emissions

Finish

- Utilizes premium ultra-weatherable TGIC based polyester powder coatings to withstand extended outdoor exposure, providing excellent resistance to corrosion, ultraviolet degradation and abrasion
- Exceptional E-Coat epoxy primer with an ultra-durable powder topcoat, electrostatically applied, thermally cured are provided for seaside application as customized requirements
- Standard color includes Dark Bronze and Light Gray. RAL & Customized color available with MOQ 100pcs



Electrical

- LED driver & electric parts are directly mounted to upper housing thermal pad for optimal thermal performance
- Input voltage 100-277Vac 50/60Hz, and 347-480Vac 60Hz only for 61.5W version
- PF>0.92 at full load. THD<10% at full load.

Dimming and Controls

- 0-10V & 1-10V dimmable, dimming range from 10% to 100% through the use of the standard 0-10V interface
- DALI Control gear dim-to-off

Mountings

- 76mm (3.0") Post-top mount for 60mm (2-3/8") OD Tenon; 40mm (1-3/5") & 50mm (2.0") OD Tenon customized
- 102mm (4.0") Post-top mount for 60mm (2-3/8") OD Tenon; 50mm (2.0") O.D. Tenon as customized
- Flush mount 60mm (2-3/8") O.D. Pole; 40mm (1-3/5") & 50mm (2.0") O.D. Pole as customized
- Secured via six sets of concealed stainless steel screws

LUMEN PACKAGE AND POWER

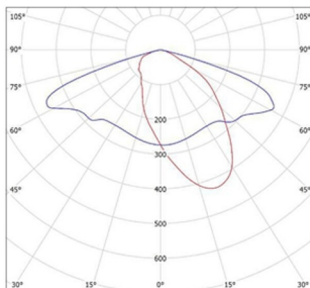
SEVILLE led luminaire					
No. of Models	Wattage	L/W	WW	NW	CW
RAY-EW-URB-PT- 25- G1F	24W	120-125	2,760 lm	2,880 lm	2,760 lm
RAY-EW-URB-PT- 35- G1F	35W	120-125	4,025 lm	4,200 lm	4,375 lm
RAY-EW-URB-PT- 58- G1F	58W	120-125	6,670 lm	6,960 lm	7,250 lm
RAY-EW-URB-PT- 80- G1F	80W	120-125	9,200 lm	9,600 lm	10,000 lm

APPLICATION TYPE

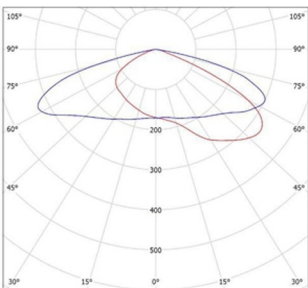


LIGHT DISTRIBUTION

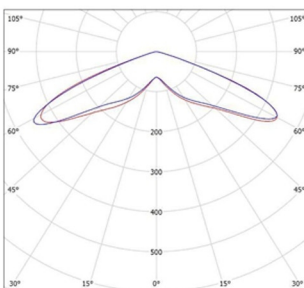
TYPE II



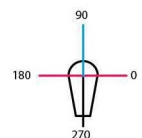
TYPE III



TYPE V



C Demi-plans
270.0
180.00
90.0



LIGHT

Lumens maintenance and Warranty

- Projected L90B10 > 50,000 hours at Ta=25°C
- Projected LED failure rate 0.1% ≤ 50,000 hours

Installations and Maintenance

- Suggested installation height 2.5m(8ft) to 6.0m(20ft)
- Tool-less opening and Easy maintenance on-site
- All external screws are in AISI 304 stainless steel. Screw connection block or as option an external IP connector
- 0.5m outlet Input cable offered as standard and customized cable length is acceptable

Ratings

- CE-EMC CE-LVD SAA C-tick IEC ETL and DLC Listed
- Complies with the materials of RoHS
- Operating temperature rated at -40°C to 50°C





SEVILLE
LED LIGHTING