



البابطين للطاقة و الاتصالات
AL-BABTAIN POWER & TELECOM



SEVILLE PLUS

LED LIGHTING



DESCRIPTIONS

Seville Plus is designed to provide ambient and residential lighting. Its elegant and harmonious design make it not only a lantern, but also a work of art, clean, smooth design blending harmoniously into door outdoor environments.

SPECIFICATIONS

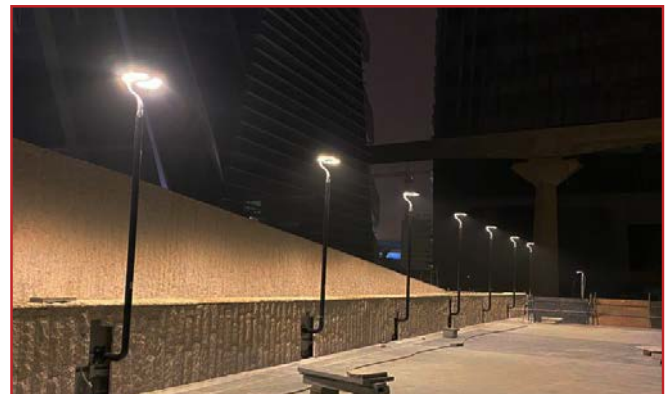
Mounting	Post-top
Light Source	LED
Material	Die cast aluminum
Finish	Polyester powder Paint
Body Color	Silver Gray, Black ,other color on request
Diffuser	PC Diffuser
CRI	Ra>70, 80, 90
Light distribution	Type IV (83°x142°) / Type V (143°x146°)
Power factor	>0.9
Operating temp (°C)	-40°C ~ +65°C
Average Life Time (Hrs)	50,000 Hrs
Driver Mounting	Built-in
Input Voltage/ Frequency	220-240V, 50/60Hz

SEVILLE PLUS - Post-top

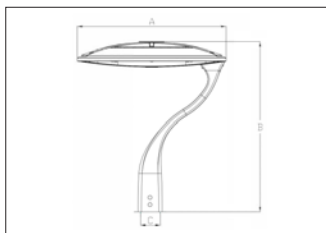


APPLICATION

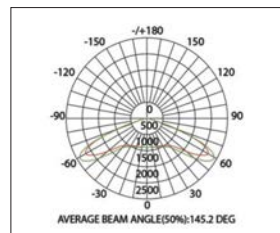
Garden, Park, Pathway, Road etc...



DIMENSIONS



PHOTOMETRIC DATA



CODE	Wattage	Delivered Output (lm)	Color Temperature	Dimension ØxH (mm)	
RAY- SEVILLE PLUS- URB- PT- IP66- 25W	25W	3300lm	3000K/ 4000K/ 5000K/ 5700K/ 6500K	Ø410* 530* Ø62	N/A
RAY- SEVILLE PLUS- URB- PT- IP66- 50W	50W	6500lm	3000K/ 4000K/ 5000K/ 5700K/ 6500K	Ø410* 530* Ø62	N/A
RAY- SEVILLE PLUS- URB- PT- IP66- 75W	75W	9150lm	3000K/ 4000K/ 5000K/ 5700K/ 6500K	Ø410* 530* Ø62	N/A
RAY- SEVILLE PLUS- URB- PT- IP66- 120W	120W	13800lm	3000K/ 4000K/ 5000K/ 5700K/ 6500K	Ø410* 530* Ø62	N/A
RAY- SEVILLE PLUS- URB- PT- IP66- 150W	150W	16500lm	3000K/ 4000K/ 5000K/ 5700K/ 6500K	Ø410* 530* Ø62	N/A

* On/Off Built-in driver Included as a standrd, 0-10 and DALI dimmable Driver as an optional.

** Available 3 hours emergency kit as an optional