



LED SPIKE

LED LIGHTING





LED SPIKE

LED LIGHTING

Description

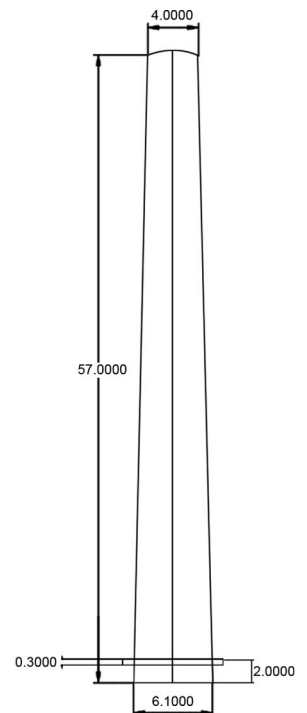
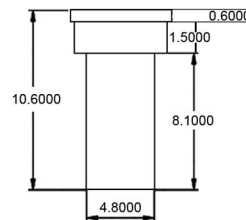
The light shade is made of PC and the lamp base is made of high strength die casting aluminum. Lamp protection grade is IP54 (IP65 on request) and electric shock protection class is I/II.

CE

IP54

IK08

65°C



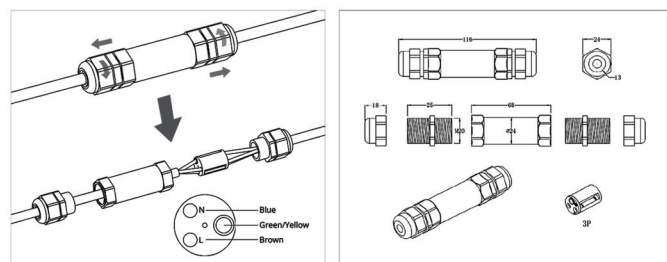
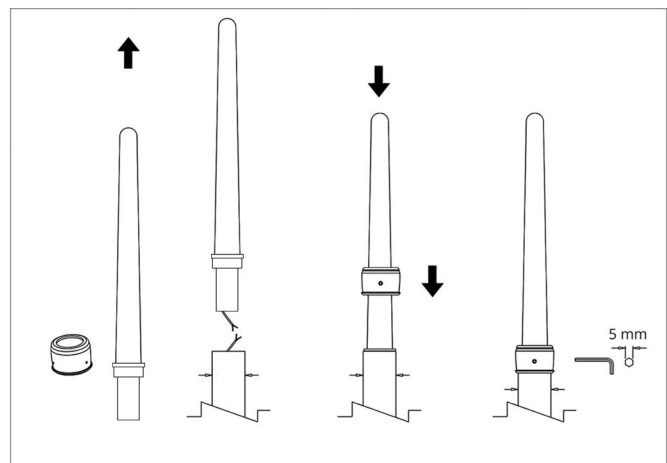
LED SPIKE is designed outdoor use and normally to be installed in the top of the street light column. It is designed to be used in the gulf environment & resist the high temperature.



Input Voltage	AC200-240V 50-63Hz
LED Type	SMD EPISTAR
Power	12W
Initial Flux	1000Lm
Power Factor	>0.95
Color	Red, Green, Warm White, White, Purple
Beam Angle	360°
Life Time	>50,000 Hour
Operating Temperature	-25°C to + 65°C
Storage Temperature	-40°C to + 80°C
Size	Outside Dimension (with aluminum base 67*5.1cm) Outside Dimension (Lighting part only 57*5cm) Hole size (in street light) 5cm
IP Rating	IP54 / IP65 (on Request)
Dimmable	No (can be dimmable on request)

INSTALLATION

1. Get Spike lamp and the bracket ready for installation
2. Turn off power switch
3. Release the nuts on waterproof case and take the connecting terminal out
4. Use a slotted screwdriver to release screws and respectively connect the N null line (blue wire), L live line (brown wire). Lock the screws
5. Put the connection terminal into waterproof case and fasten nuts.
6. Insert the Spike lamp into the pole and fixate it with a bracket.
7. Use 5 mm hexagon socket head cap screw to fixate the bracket on the pole.

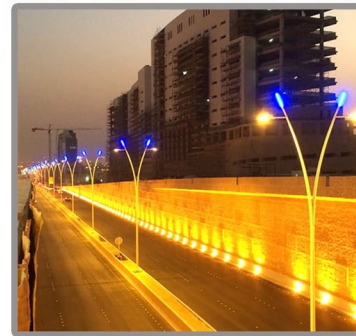


03

Order Code

Model Number	Wattage (Watts)	LED Efficiency	Color	Voltage
RAY-SP-RD	12W	95Lm/W	RED	AC85-264V 50/60Hz
RAY-SP-GR	12W	95Lm/W	GREEN	AC85-264V 50/60Hz
RAY-SP-BL	12W	95Lm/W	BLUE	AC85-264V 50/60Hz
RAY-SP-W	12W	95Lm/W	WHITE	AC85-264V 50/60Hz
RAY-SP-WW	12W	95Lm/W	WARM WHITE	AC85-264V 50/60Hz
RAY-SP-PU	12W	95Lm/W	PURPLE	AC85-264V 50/60Hz

APPLICATION TYPE



LIGHT