



البابطين للطاقة و الاتصالات  
AL-BABTAIN POWER & TELECOM



# BARRETA 2

LED LIGHTING



### DESCRIPTIONS

Barreta 2 is a design of 604mm height bollard light with rotationally symmetrical light, Height 360° beam angle or 180° half shield available. Specially designed to give a wonderful and warm ambience.

### SPECIFICATIONS

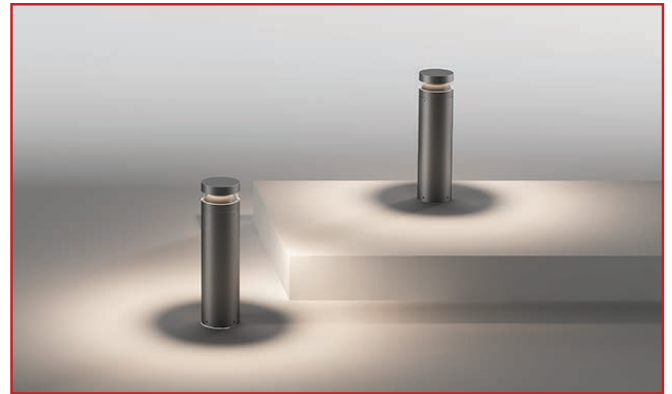
Mounting	Bollard Light
Light Source	LED
Material	Die-casting aluminum alloy, Extruded aluminium profile
Diffuser	Clear polycarbonate diffuser, aluminium reflector
CRI	Ra>80
Beam angle	360°, 180°
Ambient temperature	-20°C ~ +50°C
Average Life Time (Hrs)	50,000 Hrs
Driver Mounting	Integrated Driver
Input Voltage/ Frequency	220-240V, 50/60Hz

## BARRETA 2 - Bollard Light

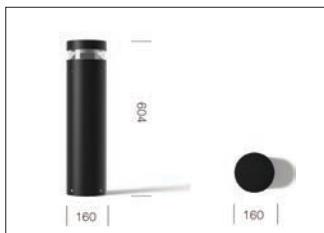


### APPLICATION

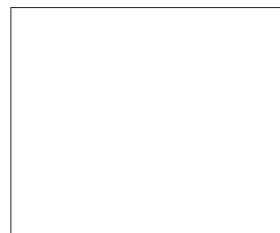
Garden, Park, Pathway etc...



### DIMENSIONS



### PHOTOMETRIC DATA



CODE	Wattage	Delivered Output (lm)	Color Temperature	Dimension ØxH (mm)	
RAY -BARRETA 2-BOLL-600-IP65-24W	24W	2100lm	3000K/ 4000K	Ø160*604	N/A