



PRO BEAM

LED FLOOD LIGHTING

01

Description

Housing: Stretched aluminum housing, surface anodic oxidation finish, corrosion-resistance, 5mm thickness safety glass, clear glass, die-casting aluminum end cap, silicone rubber gasket "H"structure barre weld in the body to reduce the tolerance between glass and profile
Silk glass for anti-glare function

Housing color: grey

LED module: high-power leds on metal-core PCB.

CE

IP66

IK08

50°C



Material: Die-cast Aluminum

Light distribution: use optical PMMA secondary light distribution technology, viewing angle, light-gathering effects can be adjusted by various lens according to demands.

Platen design: shelter inner wiring and structure to make appearance consise, secondarily fix the lens on the PCB in case of dropping off during transportation.

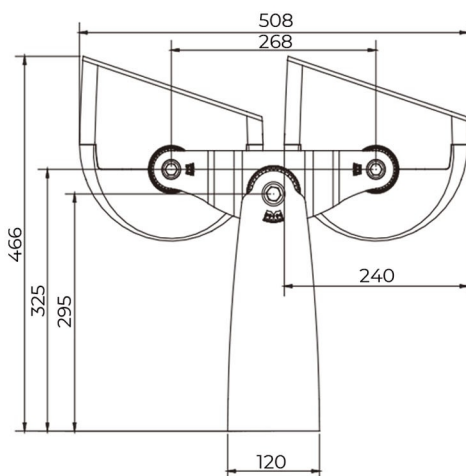
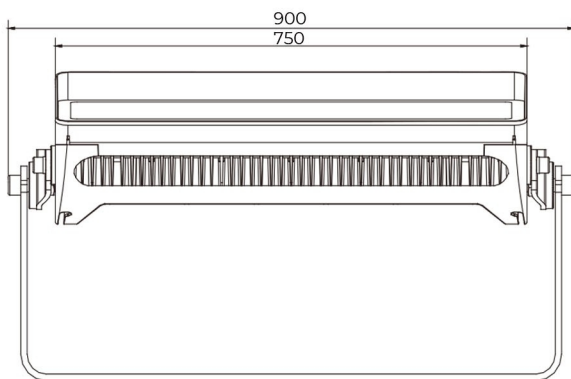
02

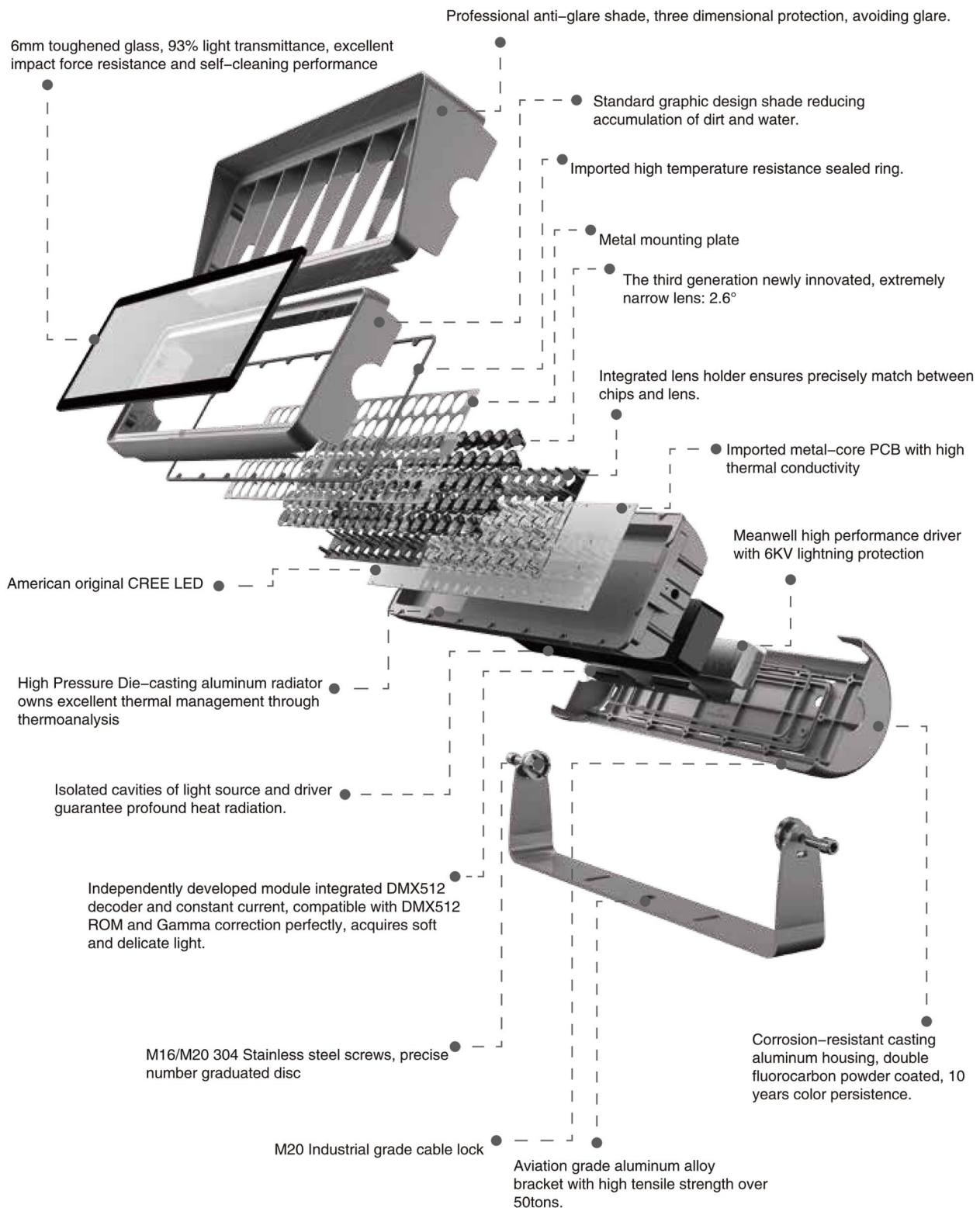
The study

Combination of different angles to wash tall buildings. For example, the upper accessory uses a small angle of 2.6° to detect the upper part, a lower accessory with a medium angle to wash the center. 200 meters of construction all with 20 lux standard. Isolated space for LED and control gear, accelerate the heat dissipation.

With elliptical and multiple symmetrical beam angle options.

Dimension drawings





LUMEN PACKAGE AND POWER

PRO BEAM LED FLOOD LIGHTING				
Model no.	Wattage	Warm White	Neutral White	Cool White
RIV-SHY-FL-SUR-40W-1272U	40W	3000K	4000K	5000K
RIV-SHY-FL-SUR-56W-1272U	56W	3000K	4000K	5000K
RIV-SHY-FL-SUR-90W-1272U	90W	3000K	4000K	5000K
RIV-SHY-FL-SUR-160W-1272U	160W	3000K	4000K	5000K
RIV-SHY-FL-SUR-210W-1272U	210W	3000K	4000K	5000K
RIV-SHY-FL-SUR-300W-1272U	300W	3000K	4000K	5000K
RIV-SHY-FL-SUR-420W-1272U	420W	3000K	4000K	5000K
RIV-SHY-FL-SUR-600W-1272U	600W	3000K	4000K	5000K

PRO BEAM LED FLOOD LIGHTING			
Model no.	Wattage	RGBW	RGBA (AMBER)
RIV-SHY-FL-SUR-72W-1272U	72W	RGBW	-
RIV-SHY-FL-SUR-90W-1272U	90W	RGBW	RGBA (AMBER)
RIV-SHY-FL-SUR-150W-1272U	150W	RGBW	-
RIV-SHY-FL-SUR-210W-1272U	210W	RGBW	RGBA (AMBER)
RIV-SHY-FL-SUR-360W-1272U	360W	RGBW	-
RIV-SHY-FL-SUR-420W-1272U	420W	RGBW	RGBA (AMBER)
RIV-SHY-FL-SUR-720W-1272U	720W	RGBW	-

SPECIFICATION

Mounting	Surface mounted
Source	Cree
Chip's Qty	180 Pcs
Luminous flux	>42000LM
Lumen maintenane	50,000 hrs at 25°C
Beam angle	2.6°, 3.5°, 12°, 20°, 30°, 60°, 10x70°, 5x20°
Input voltage	AC220V
PF	>0.90
Safety class	Class I
CCT	3000K
Control	On/Off
Diffiuser	Clear tempered glass
Finished	Paint RAL 9023
G.W	42Kgs

LIGHT DISTRIBUTION

